

### Prestained Protein Ladder, (10-250 kDa)

Cat.No. SL7001(PR901641)

Size:500µl

Cat.No. SL7002

Size:100µl

- 3µl or 5µl per loading for clear visualization during electrophoresis on 15-well or 10-well mini-gel, respectively.
- 1.5 ~ 2.5 µl per well for general Western transferring.
- Apply more for thicker (> 1.5 mm) or larger gel.

#### Description:

The prestained protein ladder is a three-color protein standard with 12 pre-stained proteins covering a wide range molecular weights for 10 to 245 KDa. Proteins are covalently coupled with a blue chromophore except for two reference bands (one green and one red band at 25 kDa and 75 kDa respectively) when separated on SDS-PAGE (Tris-Glycine buffer) .The Prestained protein ladder is designed for monitoring protein separation during SDS-polyacrylamide gel electrophoresis , Verification of Western transfer efficiency on membranes (PVDF , nylon or nitrocellulose) and for approximating the size of proteins . The Ladder is Supplied in gel loading buffer and is ready to use.

2-Mercaptoethanol, 3.6 M Urea , and 15% (v/v) Glycerol).

#### Quality Control:

Under suggested condition Prestained Protein Ladder resolves 12 major bands in 15% SDS-PAGE ( Trise-Glycine buffer) and after Western blotting to nitrocellulose membrane.

#### Storage:

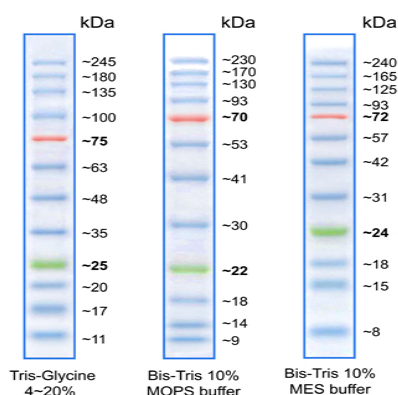
Stable for up to 2 weeks at 25 °C.  
Stable for up to 3 months at 4 °C. For long term storage at -20 °C.

#### Contents:

Approximately 0.1 ~ 0.4 mg/ml of each protein in buffer (20 mM Trisphosphate pH 7.5 at 25 °C ), 2% SDS , 1 mM

#### Guide for Molecular Weight Estimation(KDa):

Migration patterns of Prestained Protein Ladder in different electrophoresis conditions are listed below.



**Note.** The apparent molecular weight of each protein (KDa) has been determined by calibration against an unstained protein ladder in each electrophoresis condition.

\*supplement data should be considered for more accurate adjustment.

All product are for research use only. Caution: Not intended for human or animal diagnostic or therapeutic uses.

SinaClon BioScience

[www.sinaclon.com](http://www.sinaclon.com)

Tel: +98(0)21 4463 0050-51

+98(0)21 4466 5156

Customer Service: +98(0)21 4463 3016

Place your order: [order@sinaclon.com](mailto:order@sinaclon.com)

Sale Office : No. 16, Sayeh Building, Nafisi Ave., Phase 1, Ekbatan, Tehran, Iran  
Tell : +9821 44661950 , +9821 44661903

[www.sinaclon.com](http://www.sinaclon.com)  
[www.sinaclon.ir](http://www.sinaclon.ir)  
[order@sinaclon.com](mailto:order@sinaclon.com)