

Prestained Protein Ladder, (10-170kDa)

Cat.No. SL7011(PR911654)

Size:500µl

Cat.No. SL7012)

Size:100µl

- 3µl or 5µl per loading for clear visualization during electrophoresis on 15-well or 10-well mini-gel , respectively.
- 2 ~ 3 µl per well for general Western transferring.
- Apply more for thicker (> 1.5 mm) or larger gel.

Description:

The prestained protein ladder is a three-color protein standard with 10 pre-stained proteins covering a wide range molecular weights for 10 to 180 KDa. Proteins are covalently coupled with a blue chromophore except for two reference bands(one green and one red band at 25 kDa and 75 kDa respectively) when separated on SDS-PAGE (Tris-Glycine buffer) .The Prestained protein ladder is designed for monitoring protein separated during SDS polyacrylamide gel electrophoresis , Verification of Western transfer efficiency on membranes (PVDF , nylon or nitrocellulose) and for approximate sizing of proteins. The Ladder is Supplied in gel loading buffer and is ready to use. Do not heat, dilute , add reducing agent before loading.

Contents:

Approximately 0.2 ~ 0.4 mg/ml of each protein in buffer (20 mM Trisphosphate pH 7.5 at 25 °C), 2% SDS , 1 mM 2-Mercaptoethanol, 3.6 M Urea , and 15% (v/v) Glycerol).

Quality Control:

5 µ of Prestained protein Ladder resolves 10 bands in 4-20% SDS-PAGE (Tris-Glycine buffer) and after Western blotting to PVDF membrane.

Storage:

Stable for up to 2 weeks at 25 °C.

Note. The apparent molecular weight of each protein (KDa) has been determined by calibration against an unstained protein ladder in each electrophoresis condition.

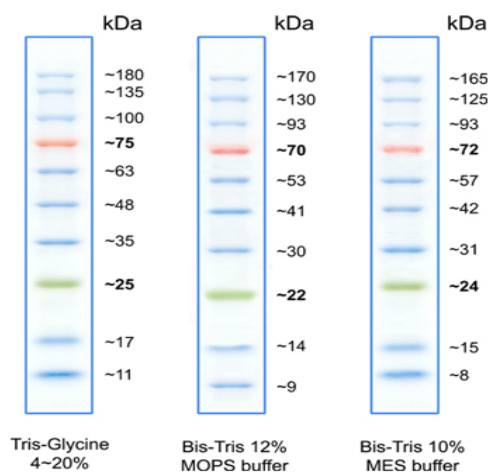
*supplement data should be considered for more accurate adjustment.

All product are for research use only. Caution: Not intended for human or animal diagnostic or therapeutic uses.

Stable for up to 3 months at 4 °C. For long term storage at -20 °C.

Guide for Molecular Weight Estimation(KDa):

Migration patterns of Prestained Protein Ladder in different electrophoresis conditions are listed below.



SinaClon BioScience

www.sinaclon.com

Tel: +98(0)21 4463 0050-51

+98(0)21 4466 5156

Customer Service: +98(0)21 4463 3016

Place your order: order@sinaclon.com